



MetaFrame XP Installation Guide



Revision History

Revision	Change Description	Updated By	Date
1	Original Version	Jason Olenick	1/8/2001
2	Peer Review	Drew Robbins	2/9/2001
3	Modified to current template	Drew Robbins	3/7/2001
4			
5			
6			



Table of Contents

1	Overview	1
2	System Requirements	2
3	MetaFrame XP Installation	3
3.1	Pre-Installation: Create the IMA Database	3
3.2	MetaFrame XP Installation Steps.....	3
3.3	Activating the License.....	8
3.4	Installing the Clients.....	9



1 Overview

This installation guide details CCS Best Practices when manually installing MetaFrame XP on a server. It includes details on how to create the IMA database, create an ODBC data source, install MetaFrame XP, and install the ICA client, all on a Windows 2000 Server platform.



2 System Requirements

Before beginning an installation of MetaFrame XP on a server, ensure that the server meets the following system requirements:

Software

- Windows NT Server 4.0, Terminal Server Edition with Service Pack 5 or later.
- Windows 2000 Server Family: Windows 2000 Server, Windows 2000 Advanced Server, and Windows 2000 Datacenter Server with Microsoft's Service Pack 1 or later. You must install the Terminal Services component before you install MetaFrame XP. Terminal Services is not installed in Windows 2000 by default; you can install it with Add/Remove Programs in the Control Panel. Install Terminal Services in Application Server mode.

Hardware

The following requirements are based on the requirements of the operating systems on which you run MetaFrame XP.

- **Windows NT Server 4.0, Terminal Server Edition.**
 - Pentium or better microprocessor
 - 32MB of RAM
 - 128MB of free hard disk space
- **Windows 2000 Server and Advanced Server.**
 - 133MHz or faster Pentium-compatible processor
 - 256MB of RAM
 - 2GB total memory
 - 1GB of free hard disk space
- **Windows 2000 Datacenter Server.**
 - Eight Pentium III Xeon processors
 - 256MB of RAM
 - 2GB total memory
 - 1GB of free hard disk space

Important: Microsoft recommends that you do not install Terminal Services on a Windows 2000 Server acting as a domain controller. By default, users are not able to log on to Terminal Services sessions on a domain controller. You can permit users to log on by setting the "log on locally" right; however, this is not recommended.

In addition to the Windows operating system requirements for your server, the following are required for MetaFrame XP:

- 85MB disk space for standard MetaFrame XP installation, including Citrix Management Console, without ICA Client software
- 200MB disk space for installing all ICA Client software
- 20MB disk space for NFuse services on the MetaFrame XP server

64MB RAM for MetaFrame XP services, including IMA



3 MetaFrame XP Installation

This section provides the details for the installation of MetaFrame XP. This includes documentation on creating the IMA Database, configuring a data source, and installing MetaFrame XP server and client software.

3.1 Pre-Installation: Create the IMA Database

Before the installation of MetaFrame XP can begin, the data store database must be created if using database software other than Microsoft Access for your database, such as Microsoft SQL Server or Oracle.

Since there is more than one option for your data store database, the steps required to create the database will not be covered in this document. Instead, listed below are some steps that should be taken after creating the database.

1. Create a new login. This is the login that will be used when the MetaFrame server sends information to the database. Memorize or write down the Username and Password combination given to this login. This will be needed when configuring the ODBC connection to the database during XP installation.
2. Configure the login created to have DB_Owner (dbo) access to the data store database.

3.2 MetaFrame XP Installation Steps

This section outlines the steps required for installation of MetaFrame XP from the MetaFrame XP CD on a Windows 2000 Server. Some configuration options exist during setup that may vary from the steps listed below. Please see the **Citrix® MetaFrame XP™ Application Server for Windows Guide** for more information on those options not covered in this document.

1. Exit all applications.
2. Insert the MetaFrame XP CD-ROM into the CD drive. If your CD drive supports Autorun, the MetaFrame XP splash screen appears. If the splash screen does not appear, from the **Start** menu, click **Run** and type `D:\autoroot.exe` where *D* is the path to your CD-ROM drive.
3. Click MetaFrame XP Setup.

Once MetaFrame XP Setup begins, a series of information pages and dialog boxes ask you to select options and configure MetaFrame XP. Click **Next** to continue after you complete each entry. If you want to return to a previous page to make changes, click **Back**. If you click **Cancel**, the Setup program quits without finishing installation. These configuration prompts are shown below.

4. The License Agreement Screen appears. Click 'I agree' to continue.
5. The Welcome Screen appears. Click **Next** to continue.
6. The Data Store Configuration Screen appears. Click **Next** to continue.
7. The Server Farm Selection screen appears (see Figure 1 below). Here you have two options; to create a new server farm, or join an existing IMA-based server farm. Make a selection and click **Next** to continue.



Figure 1. Server Farm Selection Screen

8. The Data Store Configuration Screen appears (see Figure 2 below). Here you have two options; use a local database (MS Access), or use a third party database, such as SQL Server or Oracle. Make a selection and click **Next** to continue.

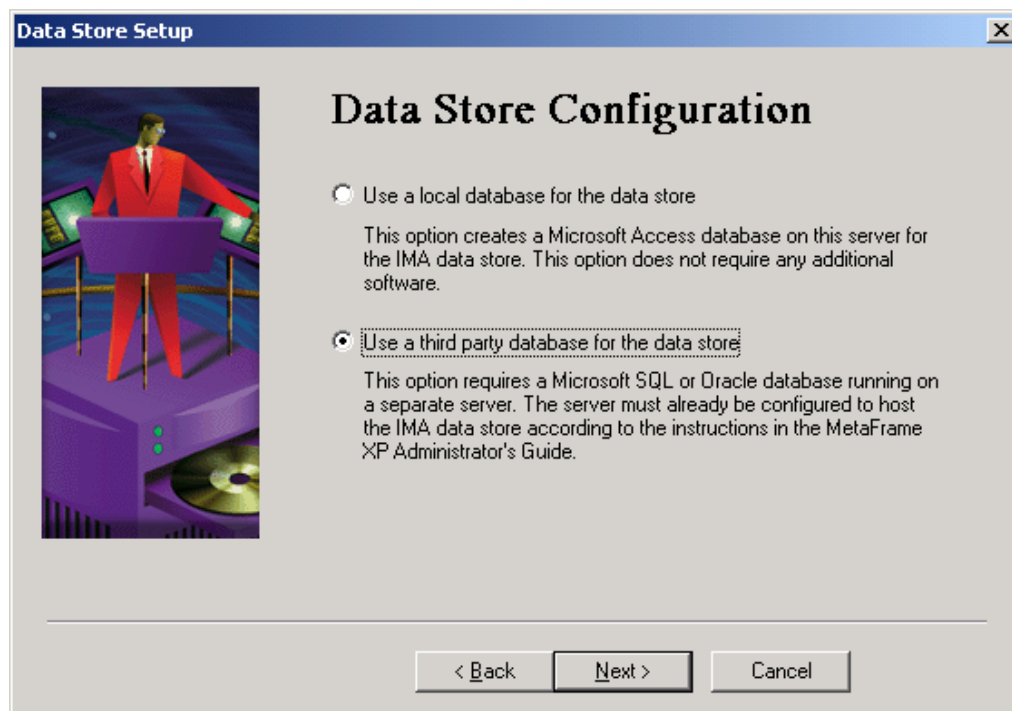


Figure 2. Data Store Configuration Screen



9. The Zone Name screen appears. Enter the name of the IMA Zone or leave it blank and the setup program will name it automatically.
10. The next screen to appear prompts for the ODBC driver information if a third party database was selected during Step 8. Choose the appropriate driver to connect to the data store database and click **Next** to continue. Setup will now prompt for information regarding the ODBC data source. Configure the data source to connect to the data store database created in the Pre-Installation phase using the Login and Password that was created. Ensure that the default database for this connection is set to the data store database. Test the data source connection if possible before moving to the next step.
11. The ODBC Access Information Screen appears (see Figure 3 below). Enter the Username in the Username textbox, along with the Password in both the Password and Verification textboxes for the login to be used to access the data store database. Click **Next** to continue.

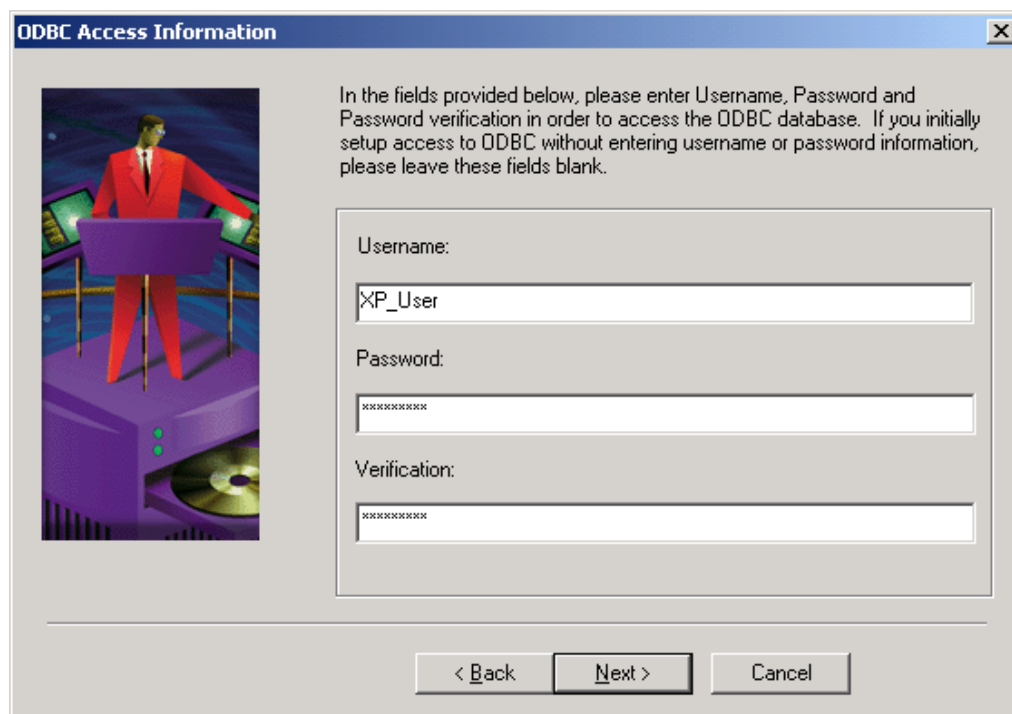


Figure 3. ODBC Access Information Screen

12. The Enter Server Farm Screen appears. Enter the name of the new or existing farm (if Join an Existing Server Farm was selected in Step 7). Click **Next** to continue.
13. The Confirm Server Farm Screen appears. Confirm the name of the farm and click **Next** to continue.
14. The MetaFrame Interoperability Screen appears (see Figure 4 below). Choose whether the server farm will operate in IMA mode only (only MetaFrame XP servers), or in mixed-mode (MetaFrame 1.8 and XP servers). Click **Next** to continue.



Figure 4. MetaFrame Interoperability Screen

15. The Farm Administrator Screen appears (see Figure 5 below). Enter the account name for the administrator of the Server Farm. The user specified in this screen will be able to add other users as farm administrators after the installation process completes. Click **Next** to continue.



Figure 5. Farm Administrator Screen

16. The Network ICA Connections Screen appears. Ensure that the proper protocols are selected (usually TCP/IP) and click **Next** to continue.
17. The TAPI Modem Setup Screen appears. If remote users need dial up access to this server, click **Add Modems** and follow the prompts, otherwise **Next** to continue.
18. The ICA Session Shadowing Screen appears. Click **Next** to allow shadowing and continue.
19. The Shadowing Setup Screen appears (see Figure 6 below). Here, configuration options to allow or prohibit all shadowing or only prohibit shadowing under special circumstances are provided. Choose the best option for the environment and click **Next** to continue.



Figure 6. Shadowing Setup Screen

20. The Drive Mapping Screen appears. Click **Next** to continue.
21. The Server Drive Reassignment Screen appears. Remap server drives if desired and then click **Next** to continue.
22. The Citrix XML Service Screen appears. There are two options presented here. If the server being installed will be used as a NFuse web server, the first option, *Share default TCP/IP port with Internet Information Server* may be the best option. Otherwise choose the port number for XML support and click **Next** to continue.
23. The Perform Installation Screen appears. Click **Next** to begin copying files to the system.
24. After some of the files have been copied to the system, the Citrix ICA Client Distribution Wizard appears. Click **Next** to begin the process.
25. On the second screen of the wizard, choose *Setup from a CD-ROM* or *Setup from Network* based on your preference. If the CD-ROM is selected, place the XP client CD into the CD-ROM drive. Click **Next** to continue.

26. On the next screen of the wizard, choose *Typical* for the default installation of the ICA Client Distribution files, or choose *Custom* to specify options better suited to the environment.
27. After the files have been copied, the MetaFrame XP 1.0 Licensing Screen appears (see Figure 7 below). Enter the license number for the software and click **Add** to add it to the licensing tool. Click **Next** to continue.

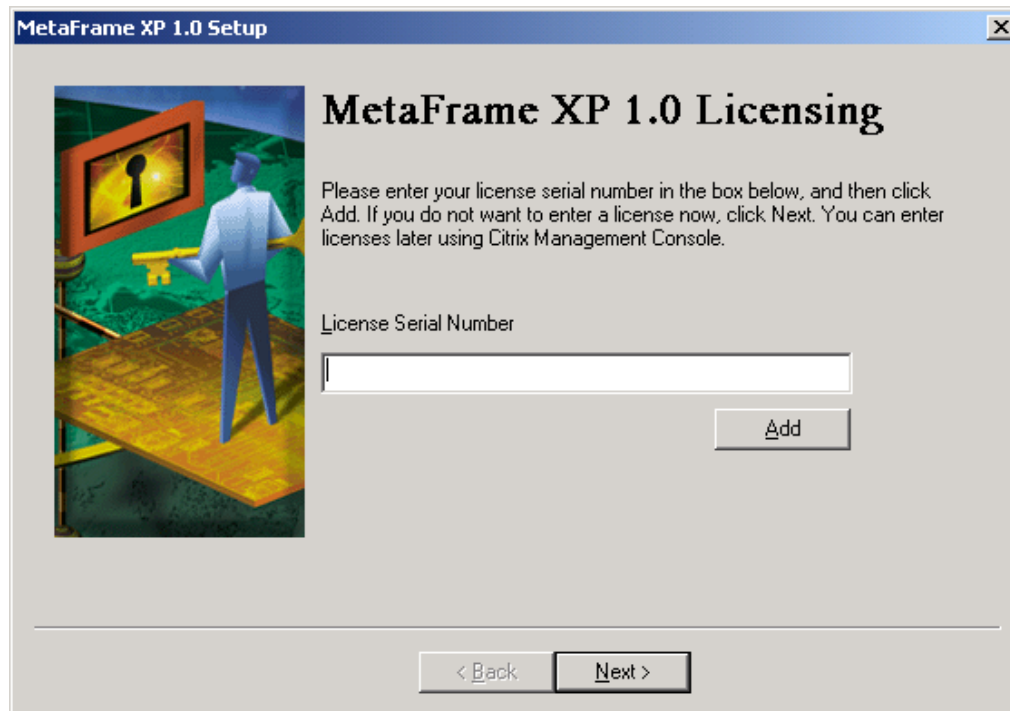


Figure 7. MetaFrame XP 1.0 Licensing

28. The MetaFrame XP Product Code Screen appears. Click the suggested product code or specify a different code and click **Next** to complete the installation.
29. If the System Restart Screen appears, click **OK** to restart the server.

3.3 Activating the License

After MetaFrame XP has been installed, the license must be activated to work properly and allow more than one concurrent user connection to the server.

The license can be activated through the Citrix Activation System (CAS) as with other licenses before, or can be activated directly through the Citrix Management Console on the MetaFrame XP server. To do the latter, open the Citrix Management Console on the MetaFrame XP server. In the left pane, expand the farm name of the server farm. Click on *Licenses*. In the right pane on the Connection tab, double-click on the *MetaFrame Connection* entry. Click on the License Numbers tab of the next screen that appears. There will be an Activate button on the right. Clicking on this button will guide you through the activation process.



3.4 Installing the Clients

To install the MetaFrame XP clients, the XP client software is required. Using the files on the MetaFrame XP Client CD, the clients can be installed via the CD or a network directory. The steps delineated below should be followed to install the client software.

1. Run setup.exe from within a subdirectory of the ICAInst directory. For example, to install the Win32 client, run setup.exe from D:\ICAInst\EN\ICA32\Disks\Disk1, where *D* is the path to your CD-ROM drive.
2. Click **Next** to continue on the Welcome Screen.
3. On the Agreement Screen, click **Yes** to proceed with the installation.
4. On the Choose Destination Location Screen, choose the local directory to which the ICA clients should be installed. Click **Next** to continue.
5. On the Choose Program Folder Screen, choose the program folder to which the ICA clients should be installed. Click **Next** to continue.
6. The ICA Client Name Screen appears. Enter the machine name of the ICA Client machine. Click **Next** to continue.
7. Select *No* to not automatically use the local user name and password when using the ICA client. Click **Next** to continue.
8. Files will now be copied. Click **OK** to complete the installation.